

# 2008 Houchens Industries/KHSAA Girls' Sweet 16 - Game Box Score

## Marshall County Lady Marshals vs. Butler Bearettes

**Date: 03/12/2008 Time: 6:30 pm CST Site: Diddle Arena, Bowling Green, KY Attendance: N**

### Visitors: Butler Bearettes

##	Name	P	FG	3 Pt	FT	PTS	ORB	DRB	TR	PF	AST	TO	BS	ST	MIN
1	Heather Wheat		2/2	0/3	1/2	5	2	2	4	1	0	1	1	0	13:57
3	* Kara Pile		2/4	1/3	0/0	7	0	2	2	1	3	2	2	4	22:48
20	Kirsten Snyder		0/1	0/0	0/0	0	0	0	0	0	0	0	0	0	3:46
21	Jordan Pearson		0/0	0/0	0/0	0	0	0	0	1	0	1	0	1	4:38
23	* Brittany Harris		2/4	1/2	0/0	7	0	1	1	3	3	2	0	2	17:35
24	* Shontel Bates		0/4	0/1	3/4	3	3	0	3	0	4	2	0	1	12:52
25	* Tia Gibbs		6/10	3/5	0/0	21	4	10	14	0	4	4	1	4	25:08
30	* Tiara Hopper		5/12	0/0	3/6	13	5	4	9	3	1	3	2	2	27:21
31	Kylie Kiesel		0/0	0/0	0/0	0	0	0	0	0	0	0	0	0	3:46
32	Marki Goodlett		0/0	0/2	0/0	0	1	0	1	0	0	0	0	0	1:57
33	Megan Cureton		1/2	0/2	0/0	2	2	0	2	1	0	0	0	1	8:00
35	Moriah Corey		0/0	0/0	0/1	0	0	0	0	1	0	0	0	0	3:05
42	Whitney Reed		3/4	0/0	1/2	7	2	1	3	2	1	0	0	3	15:06
4	Blake Schweitzer		0/0	0/0	0/0	0	0	0	0	0	0	0	0	0	0:01
	Team						0	1	1						
	<b>Totals</b>		<b>21/43</b>	<b>5/18</b>	<b>8/15</b>	<b>65</b>	<b>19</b>	<b>21</b>	<b>40</b>	<b>13</b>	<b>16</b>	<b>15</b>	<b>6</b>	<b>18</b>	<b>160</b>
	<b>2 PT FG</b>			1st Half	10/20	50.0%	2nd Half	11/23	47.8%	Game	21/43	48.8%			
	<b>3 PT FG</b>			1st Half	3/6	50.0%	2nd Half	2/12	16.7%	Game	5/18	27.8%			
	<b>Free Throws</b>			1st Half	3/6	50.0%	2nd Half	5/9	55.6%	Game	8/15	53.3%			

### Home: Marshall County Lady Marshals

##	Name	P	FG	3 Pt	FT	PTS	ORB	DRB	TR	PF	AST	TO	BS	ST	MIN
10	Tory Fehrenbacher		0/0	0/0	0/0	0	0	0	0	0	0	0	0	0	1:00
12	Jordan Gilland		0/1	0/0	0/0	0	0	1	1	0	1	1	0	0	12:25
14	Laken Tabor		0/1	1/6	0/0	3	0	0	0	0	0	1	0	0	10:14
21	Michaela Hunt		0/0	0/0	0/0	0	0	1	1	0	0	1	0	0	2:38
23	Taylor Clark		0/0	0/0	0/0	0	0	0	0	0	0	0	0	0	1:00
24	* Margaret Thomas		2/4	0/0	0/0	4	0	1	1	2	1	10	1	1	20:58
30	Jordan Hall		0/0	1/1	0/0	3	0	0	0	2	0	1	0	0	5:49
31	* Hannah Ellis		1/3	0/0	1/4	3	4	0	4	1	2	0	3	2	29:22
33	* Kara Fisk		0/4	0/0	0/0	0	1	1	2	3	0	4	0	0	14:58
34	Kelsey Lawson		1/1	0/0	0/0	2	0	0	0	0	0	0	0	0	1:38
35	* Jessica Holder		3/14	1/2	3/4	12	1	8	9	4	0	6	0	1	29:22
40	Lena Bohannon		0/0	0/0	2/2	2	0	1	1	1	1	0	0	0	4:53
41	* Ashley Smith		4/8	0/0	1/1	9	4	4	8	2	0	4	1	0	25:43
	Team						2	3	5			1			
	<b>Totals</b>		<b>11/36</b>	<b>3/9</b>	<b>7/11</b>	<b>38</b>	<b>12</b>	<b>20</b>	<b>32</b>	<b>15</b>	<b>5</b>	<b>29</b>	<b>5</b>	<b>4</b>	<b>160</b>
	<b>2 PT FG</b>			1st Half	4/15	26.7%	2nd Half	7/21	33.3%	Game	11/36	30.6%			
	<b>3 PT FG</b>			1st Half	1/3	33.3%	2nd Half	2/6	33.3%	Game	3/9	33.3%			
	<b>Free Throws</b>			1st Half	3/4	75.0%	2nd Half	4/7	57.1%	Game	7/11	63.6%			

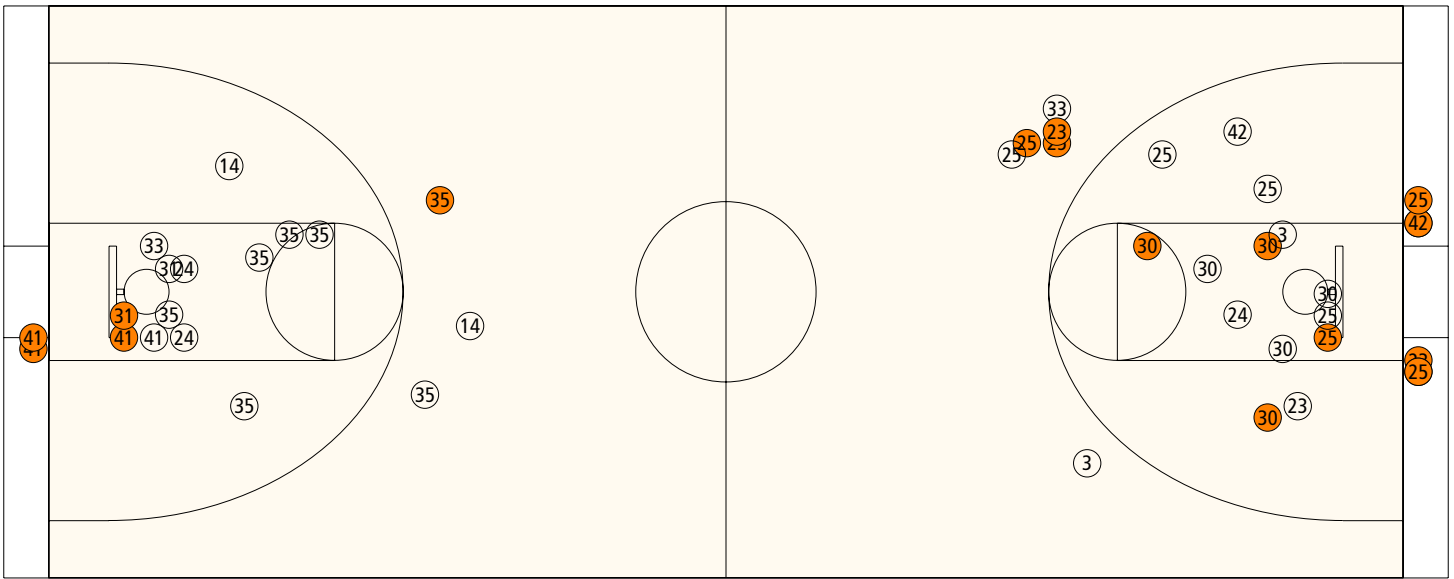
	BUTL	Mar		BUTL	Mar		BUTL	Mar
Free Throw Pts	8	7	3Pt Points	15	9	Pts/Possession	1.02	0.57
Pts off Turnovers	28	7	2nd Chance Points	21	10	Pts off Bench	14	10
Total Rebounds	40	32	Team Rebounds	1	5	Dead Ball Reb	2	3
Off Rebound %	48.7	36.4	Def Rebound %	63.6	51.3	Total Rebound %	55.6	44.4
3Pt Efficiency	-4.8	+13.0	Def. Stops	50	35	Pts/Shot	0.96	0.76
Technical Fouls	<b>BUTL</b>	None						
	<b>Mar</b>	None						
Officials	Shawn Hall, Boyd Harris, Terry Baldwin							

	Qtr 1	Qtr 2	Qtr 3	Qtr 4	OT 1	OT 2	OT 3	OT 4	Total
<b>Butler Bearettes</b>	15	17	19	14	0	0	0	0	<b>65</b>
<b>Marshall County Lady Marshals</b>	9	5	7	17	0	0	0	0	<b>38</b>

**Largest Lead** Mar 25 BUTL 61 (36 pts) **Lead Changes** 1 **Number of Ties** 1

**Comments:** None

### FIRST HALF



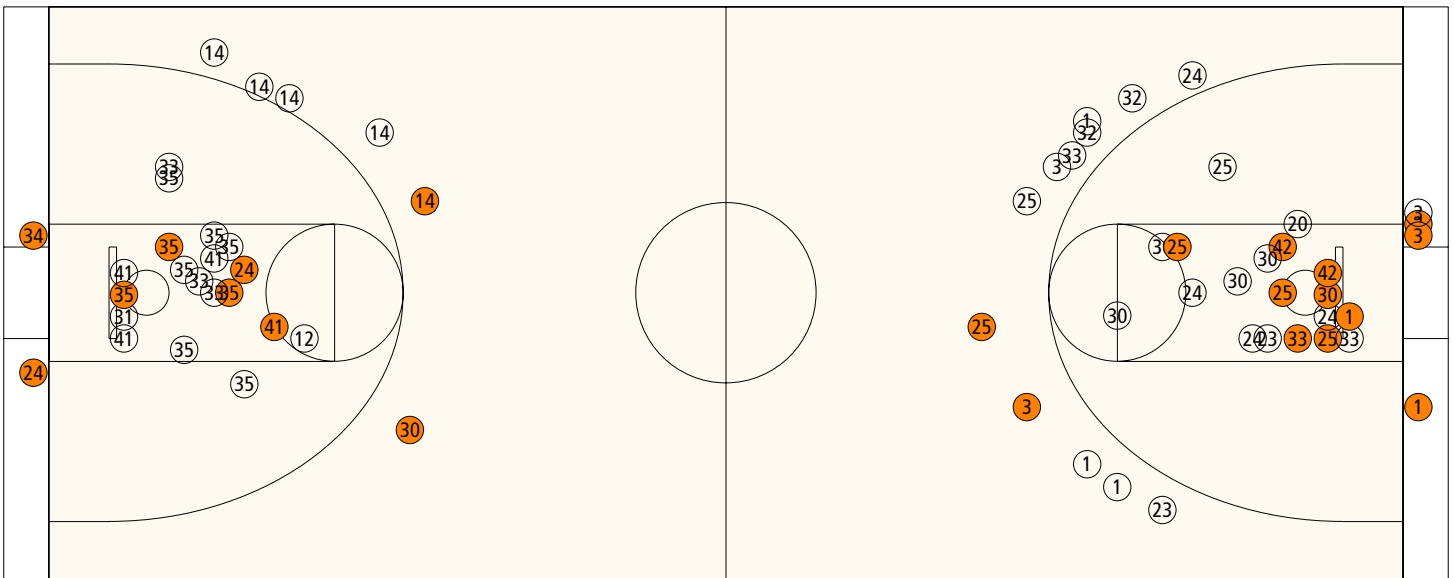
#### Marshall County

Shooting	Pts	Pts
2FG 4/15 (26.7%)	8	Pts/Shot 0.70
3FG 1/3 (33.3%)	3	2nd Eff Pts 4
TFG 5/18 (27.8%)		Pts off TO's 0
FT 3/4 (75.0%)	3	3Pt Eff +15.6
Scoring Distribution: 2FG 57.1% 3FG 21.4% FT 21.4%		

#### Butler

Shooting	Pts	Pts
2FG 10/20 (50.0%)	20	Pts/Shot 1.10
3FG 3/6 (50.0%)	9	2nd Eff Pts 4
TFG 13/26 (50.0%)		Pts off TO's 18
FT 3/6 (50.0%)	3	3Pt Eff +16.7
Scoring Distribution: 2FG 62.5% 3FG 28.1% FT 9.4%		

### SECOND HALF



#### Marshall County

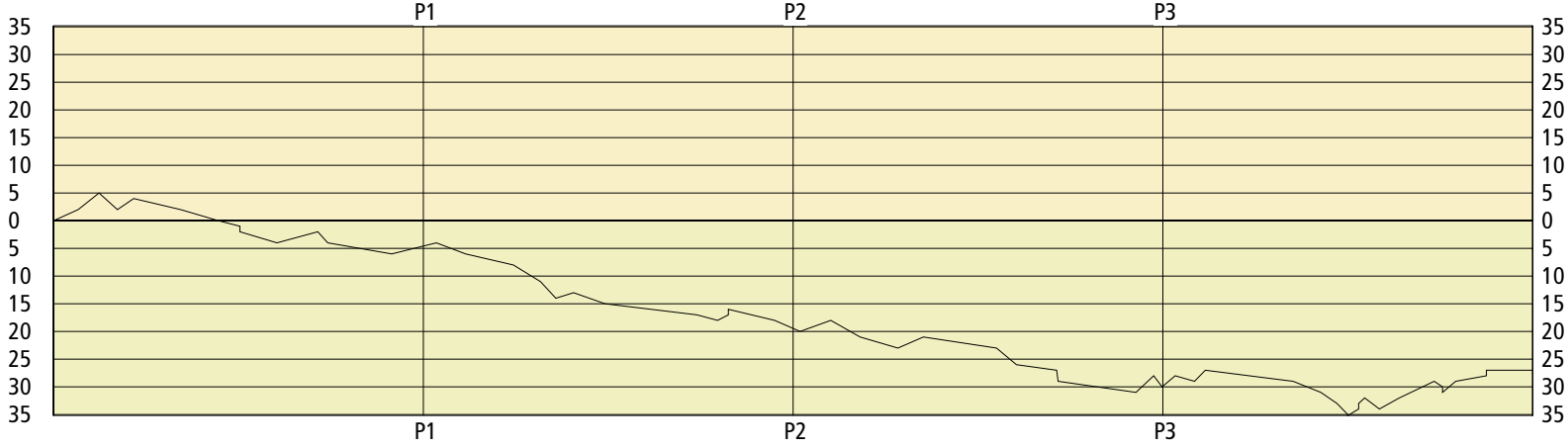
2FG 7/21 (33.3%)	14	Pts/Shot 0.80
3FG 2/6 (33.3%)	6	2nd Eff Pts 6
TFG 9/27 (33.3%)		Pts off TO's 7
FT 4/7 (57.1%)	4	3Pt Eff +11.1
Scoring Distribution: 2FG 58.3% 3FG 25.0% FT 16.7%		

#### Butler

2FG 11/23 (47.8%)	22	Pts/Shot 0.85
3FG 2/12 (16.7%)	6	2nd Eff Pts 17
TFG 13/35 (37.1%)		Pts off TO's 10
FT 5/9 (55.6%)	5	3Pt Eff -15.2
Scoring Distribution: 2FG 66.7% 3FG 18.2% FT 15.2%		

Lady Marshals

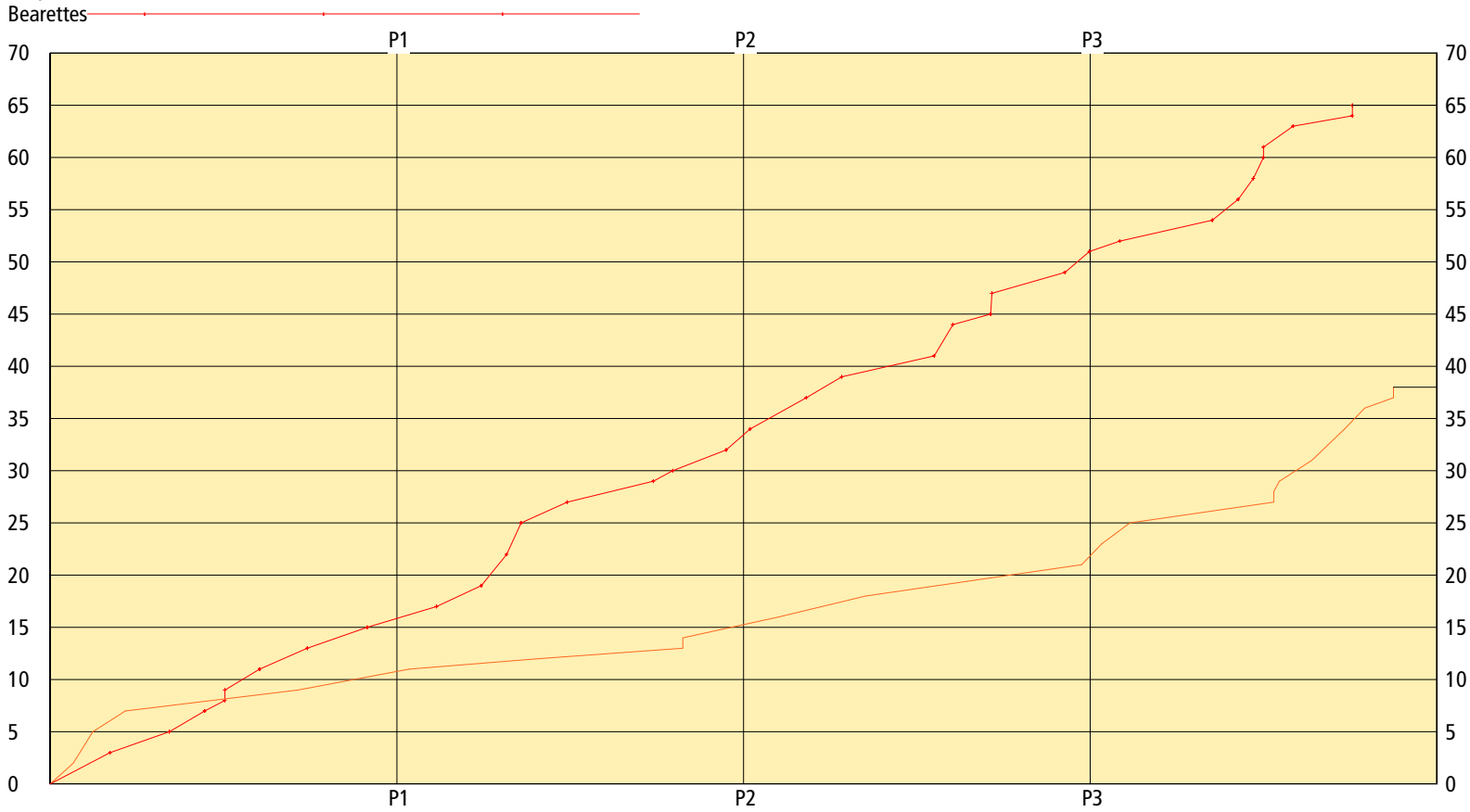
LEAD TIMELINE



Bearettes

Lady Marshals

SCORING TIMELINE



Largest Lead Mar 25 BUTL 61 (36 pts) Lead Changes 1 Number of Ties 1

**2008 Houchens Industries/KHSAA Girls' Sweet 16 - Play by Play Report - Scoring Only (pg 1)**  
**Marshall County Lady Marshals vs. Butler Bearettes**  
**Date: 03/12/2008 Time: 6:30 pm CST Site: Diddle Arena, Bowling Green, KY Attendance: N**

Name	Action	Action	Score	Clock	Diff	Name	Action	Action
A Smith	Layup Made		2-0	1 7:28	+2 (L1)			
J Holder	3Pt Made	M Thomas Assist	5-0	1 7:01	+5			
			5-3	1 6:37	+2	T Gibbs	3Pt Made	S Bates Assist
A Smith	Putback Made		7-3	1 6:16	+4			
			7-5	1 5:15	+2	T Hopper	FG Made	B Harris Assist
			7-7	1 4:26	(T1)	T Gibbs	Putback Made	
			7-8	1 3:58	-1 (L2)	T Hopper	FT Made	
			7-9	1 3:58	-2	T Hopper	FT Made	
			7-11	1 3:10	-4	B Harris	Layup Made	T Gibbs Assist
H Ellis	Putback Made		9-11	1 2:17	-2			
			9-13	1 2:04	-4	B Harris	Layup Made	T Gibbs Assist
			9-15	1 0:41	-6	T Gibbs	Layup Made	

**End of Period Summary Lady Marshals 9 Bearettes 15**

**Largest Lead: Lady Marshals 9 Bearettes 15 (6 pts)**

**Lead in Period: Lady Marshals 9 Bearettes 15 (6 pts)**

**9 for 6 oppo pts**

**4 for 4 pts**

**4/12 for 33.3 %**

**0/0 for 0.00 %**

**Turnovers**

**2nd Chances**

**Field Goals**

**Free Throws**

**Lead Changes: 2 Ties: 1**

**Lead Changes: 1 Ties: 1 (this period)**

**4 for 0 oppo pts**

**4 for 4 pts**

**6/14 for 42.9 %**

**2/4 for 50.0 %**

A Smith	Layup Made		11-15	2 7:43	-4			
			11-17	2 7:05	-6	T Hopper	FG Made	B Harris Assist
			11-19	2 6:03	-8	T Hopper	FG Made	K Pile Assist
			11-22	2 5:28	-11	B Harris	3Pt Made	K Pile Assist
			11-25	2 5:08	-14	T Gibbs	3Pt Made	S Bates Assist
J Holder	FT Made		12-25	2 4:45	-13	B Harris	Personal Foul	
			12-27	2 4:04	-15	T Hopper	Layup Made	S Bates Assist
			12-29	2 2:05	-17	W Reed	Layup Made	T Hopper Assist
			12-30	2 1:38	-18	S Bates	FT Made	
J Holder	FT Made		13-30	2 1:24	-17			
J Holder	FT Made		14-30	2 1:24	-16			
			14-32	2 0:24	-18	T Gibbs	Layup Made	K Pile Assist

**End of Period Summary Lady Marshals 14 Bearettes 32**

**Largest Lead: Lady Marshals 12 Bearettes 30 (18 pts)**

**Lead in Period: Lady Marshals 12 Bearettes 30 (18 pts)**

**10 for 12 oppo pts**

**1 for 0 pts**

**1/6 for 16.7 %**

**3/4 for 75.0 %**

**Turnovers**

**2nd Chances**

**Field Goals**

**Free Throws**

**Lead Changes: 2 Ties: 1**

**Lead Changes: 0 Ties: 0 (this period)**

**3 for 0 oppo pts**

**0 for 0 pts**

**7/12 for 58.3 %**

**1/2 for 50.0 %**

M Thomas	FG Made		14-34	3 7:51	-20	T Gibbs	Putback Made	
			16-34	3 7:11	-18			
			16-37	3 6:33	-21	K Pile	3Pt Made	B Harris Assist
			16-39	3 5:44	-23	K Pile	Layup Made	T Gibbs Assist
M Thomas	Layup Made	H Ellis Assist	18-39	3 5:11	-21			
			18-41	3 3:36	-23	W Reed	FG Made	T Gibbs Assist
			18-44	3 3:10	-26	T Gibbs	3Pt Made	
			18-45	3 2:18	-27	W Reed	FT Made	
			18-47	3 2:16	-29	T Hopper	Putback Made	

**2008 Houchens Industries/KHSAA Girls' Sweet 16 - Play by Play Report - Scoring Only (pg 2)**  
**Marshall County Lady Marshals vs. Butler Bearettes**  
**Date: 03/12/2008 Time: 6:30 pm CST Site: Diddle Arena, Bowling Green, KY Attendance: N**

Name	Action	Action	Score	Clock	Diff	Name	Action	Action	
			18-49	3	0:35	-31	T Gibbs	FG Made	S Bates Assist
L Tabor	3Pt Made		21-49	3	0:12	-28			
			21-51	3	0:01	-30	W Reed	Putback Made	

**End of Period Summary Lady Marshals 21 Bearettes 51**

**Largest Lead: Lady Marshals 18 Bearettes 49 (31 pts)**

**Lead Changes: 2 Ties: 1**

**Lead in Period: Lady Marshals 18 Bearettes 49 (31 pts)**

**Lead Changes: 0 Ties: 0 (this period)**

**5 for 5 oppo pts**

**Turnovers**

**5 for 2 oppo pts**

**3 for 3 pts**

**2nd Chances**

**10 for 12 pts**

**3/13 for 23.1 %**

**Field Goals**

**8/20 for 40.0 %**

**0/0 for 0.00 %**

**Free Throws**

**1/2 for 50.0 %**

J Holder	FG Made	H Ellis Assist	23-51	4	7:44	-28			
M Thomas	Personal Foul		23-52	4	7:19	-29	T Hopper	FT Made	
J Holder	Putback Made		25-52	4	7:05	-27			
			25-54	4	5:11	-29	H Wheat	Layup Made	W Reed Assist
			25-56	4	4:35	-31	K Pile	Layup Made	
			25-58	4	4:14	-33	T Gibbs	FG Made	
			25-60	4	4:00	-35	H Wheat	Putback Made	
			25-61	4	4:00	-36	H Wheat	FT Made	
A Smith	FG Made		27-61	4	3:46	-34			
A Smith	FT Made		28-61	4	3:46	-33			
H Ellis	FT Made		29-61	4	3:38	-32			
			29-63	4	3:19	-34	M Cureton	FG Made	
J Holder	FG Made		31-63	4	2:53	-32			
J Hall	3Pt Made	J Gilland Assist	34-63	4	2:08	-29			
J Hall	Personal Foul		34-64	4	1:57	-30	S Bates	FT Made	
			34-65	4	1:57	-31	S Bates	FT Made	
K Lawson	Layup Made	L Bohannon Assist	36-65	4	1:40	-29			
L Bohannon	FT Made		37-65	4	1:00	-28			
L Bohannon	FT Made		38-65	4	1:00	-27			

**End of Period Summary Lady Marshals 38 Bearettes 65**

**Largest Lead: Lady Marshals 25 Bearettes 61 (36 pts)**

**Lead Changes: 2 Ties: 1**

**Lead in Period: Lady Marshals 25 Bearettes 61 (36 pts)**

**Lead Changes: 0 Ties: 0 (this period)**

**5 for 5 oppo pts**

**Turnovers**

**3 for 5 oppo pts**

**4 for 3 pts**

**2nd Chances**

**5 for 5 pts**

**6/14 for 42.9 %**

**Field Goals**

**5/15 for 33.3 %**

**4/7 for 57.1 %**

**Free Throws**

**4/7 for 57.1 %**

No.	Butler Bearettes	Total FG		3-point		Free throw		Rebounds			F	TP	A	TO	BLK	STL	MIN	
		FG	FGA	FG	FGA	FT	FTA	Off	Def	Tot								
1	Heather Wheat	2	5	0	3	1	2	2	2	4	1	5	0	1	1	0	13:57	
3	<b>Kara Pile</b>	3	7	1	3	0	0	0	2	2	1	7	3	2	2	4	22:48	
20	Kirsten Snyder	0	1	0	0	0	0	0	0	0	0	0	0	0	0	0	3:46	
21	Jordan Pearson	0	0	0	0	0	0	0	0	0	0	0	0	1	0	1	4:38	
23	<b>Brittany Harris</b>	3	6	1	2	0	0	0	1	1	3	7	3	2	0	2	17:35	
30	<b>Tiara Hopper</b>	5	12	0	0	3	6	5	4	9	3	13	1	3	2	2	27:21	
25	<b>Tia Gibbs</b>	9	15	3	5	0	0	4	10	14	0	21	4	4	1	4	25:08	
42	Whitney Reed	3	4	0	0	1	2	2	1	3	2	7	1	0	0	3	15:06	
24	<b>Shontel Bates</b>	0	5	0	1	3	4	3	0	3	0	3	4	2	0	1	12:52	
33	Megan Cureton	1	4	0	2	0	0	2	0	2	1	2	0	0	0	1	8:00	
31	Kylie Kiesel	0	0	0	0	0	0	0	0	0	0	0	0	0	0	0	3:46	
35	Moriah Corey	0	0	0	0	0	1	0	0	0	1	0	0	0	0	0	3:05	
32	Marki Goodlett	0	2	0	2	0	0	1	0	1	0	0	0	0	0	0	1:57	
4	Blake Schweitzer	0	0	0	0	0	0	0	0	0	0	0	0	0	0	0	0:01	
<b>Team (Included in Totals)</b>								<b>0</b>	<b>1</b>	<b>1</b>								
<b>Totals</b>		<b>26</b>	<b>61</b>	<b>5</b>	<b>18</b>	<b>8</b>	<b>15</b>	<b>19</b>	<b>21</b>	<b>40</b>	<b>13</b>	<b>65</b>	<b>16</b>	<b>15</b>	<b>6</b>	<b>18</b>	<b>160</b>	
		Total FG%:1st half 13 - 26 (50.0%)		2nd half 13 - 35 (37.1%)		Game 26 - 61 (42.6%)		Deadball										
		3Pt FG%: 1st half 3 - 6 (50.0%)		2nd half 2 - 12 (16.7%)		Game 5 - 18 (27.8%)		rebounds										2
		FT%: 1st half 3 - 6 (50.0%)		2nd half 5 - 9 (55.6%)		Game 8 - 15 (53.3%)												
No.	Marshall County Lady Marshals	Total FG		3-point		Free throw		Rebounds			F	TP	A	TO	BLK	STL	MIN	
		FG	FGA	FG	FGA	FT	FTA	Off	Def	Tot								
10	Tory Fehrenbacher	0	0	0	0	0	0	0	0	0	0	0	0	0	0	0	1:00	
12	Jordan Gilland	0	1	0	0	0	0	0	1	1	0	0	1	1	0	0	12:25	
14	Laken Tabor	1	7	1	6	0	0	0	0	0	0	3	0	1	0	0	10:14	
21	Michaela Hunt	0	0	0	0	0	0	0	1	1	0	0	0	1	0	0	2:38	
23	Taylor Clark	0	0	0	0	0	0	0	0	0	0	0	0	0	0	0	1:00	
31	<b>Hannah Ellis</b>	1	3	0	0	1	4	4	0	4	1	3	2	0	3	2	29:22	
35	<b>Jessica Holder</b>	4	16	1	2	3	4	1	8	9	4	12	0	6	0	1	29:22	
41	<b>Ashley Smith</b>	4	8	0	0	1	1	4	4	8	2	9	0	4	1	0	25:43	
24	<b>Margaret Thomas</b>	2	4	0	0	0	0	0	1	1	2	4	1	10	1	1	20:58	
33	<b>Kara Fisk</b>	0	4	0	0	0	0	1	1	2	3	0	0	4	0	0	14:58	
30	Jordan Hall	1	1	1	1	0	0	0	0	0	2	3	0	1	0	0	5:49	
40	Lena Bohannon	0	0	0	0	2	2	0	1	1	1	2	1	0	0	0	4:53	
34	Kelsey Lawson	1	1	0	0	0	0	0	0	0	0	2	0	0	0	0	1:38	
<b>Team (Included in Totals)</b>								<b>2</b>	<b>3</b>	<b>5</b>								
<b>Totals</b>		<b>14</b>	<b>45</b>	<b>3</b>	<b>9</b>	<b>7</b>	<b>11</b>	<b>12</b>	<b>20</b>	<b>32</b>	<b>15</b>	<b>38</b>	<b>5</b>	<b>29</b>	<b>5</b>	<b>4</b>	<b>160</b>	
		Total FG%:1st half 5 - 18 (27.8%)		2nd half 9 - 27 (33.3%)		Game 14 - 45 (31.1%)		Deadball										
		3Pt FG%: 1st half 1 - 3 (33.3%)		2nd half 2 - 6 (33.3%)		Game 3 - 9 (33.3%)		rebounds										3
		FT%: 1st half 3 - 4 (75.0%)		2nd half 4 - 7 (57.1%)		Game 7 - 11 (63.6%)												

Technical Fouls: None

Attendance: N

Officials: Shawn Hall, Boyd Harris, Terry Baldwin

Score by Period	1st	2nd	3rd	4th	Final	Record	Overall	Conf
Butler Bearettes	15	17	19	14	<b>65</b>	Bearettes		
Marshall County Lady Marshals	9	5	7	17	<b>38</b>	Lady Marshals		

<b>Lady Marshals Bearettes</b>	<b>Lady Marshals Bearettes</b>	<b>Lady Marshals Bearettes</b>
Points off Turnovers 7 28	Second Effort Points 10 21	Bench Points 10 14
Points in the Paint 18 38	3 Point Points 9 15	Free Throw Points 7 8
3pt Efficiency +13.0 -4.8	Points/Shot 0.76 0.96	Defensive Stops 35 50
Largest Lead 25 61 (36 pts)	Lead Changes 1	Number of Ties 1

Game comments: None